

Newsletter

Issue: Autumn 2
Friday 30th September 2022



Find us on:



Instagram



Hello from Sian

We welcome our new Reception and Nursery parents to Tottenham Infant School.

Please ensure your details are up to date with Janet in the office, especially if you have a new phone number. We also will only allow your child to go with an identified person on your agreed list for collection. If this changes during the day you need to phone the school to let us know.

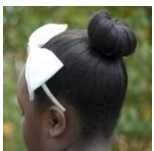
The children are settling in well and enjoying their learning. I hope you found the curriculum talks helpful, the presentations are available on the website for your reference.

We use the Big Cat Reading Scheme, together with Little Wandle Letters and Sounds for phonics. Learning to read takes lots of practise. Reading at home builds on what your child does at school and helps them grow as a reader. I will be sharing my favourite books with the children to develop their enjoyment of reading over the next few weeks.



Reminder!

All long hair is to be tied back at all times and no earrings are to be worn



EYFS Coffee Morning

Due to unforeseen circumstances, the EYFS Coffee Morning will be re-scheduled to after half-term. Information will be sent out later next week.



Attendance at Tottenhall

We are delighted to let you know that we have a new **Attendance Policy and Procedures**. The new policy gives clear guidance for families about the importance of excellent attendance as well as specific information in how school will address low and reward excellent attendance. Making sure your children attends school is the one of the most important things you can do to ensure they receive an excellent education. At Tottenhall excellent attendance is a top priority. The following extract from the policy helps to illustrate this.

Why is good attendance important?

At our school, the staff and pupils all know how important good attendance is for wellbeing and progress. In recent years much research has been carried out on the effect that poor attendance can have on progress at school and how well they achieve in life. For example, 90% attendance might sound quite good but what it really means is:

- *Your child is absent for lessons for the equivalent of one half day every week.*
- *In one year, 4 whole weeks of lessons are missed.*
- *If your child continues to attend for only 90% of the time, in 5 years, he, or she, will miss half of the school year.*

Please click [here](#) to view the Policy and Procedure in full, and I look forward to celebrating their attendance success in the future.

Colette Edwards
Attendance Officer



Next Friday is Harvest. We are collecting donations to give to the Enfield Foodbank. If you are able to donate, please bring your items in and give them to your class team. The Foodbank needs:

- CARRIER BAGS
- MIXED BEANS
- JARS OF PASTA SAUCE
- HOT CHOCOLATE
- JAM
- TINNED FRUIT, FISH, VEGETABLE SOUP
- PACKET READY MEALS
- NOODLES
- SWEET AND SAVOURY SNACKS



What will you try this Autumn?



AUTUMN

Bucket list



BUILD A DEN OUTDOORS Fly a kite

Make a scarecrow COLLECT CONKERS

Carve a pumpkin Make bird feeders



Play in a pile of leaves



Go blackberry picking

Make leaf art BAKE A CRUMBLE



Go on a scavenger hunt

Snuggle on the sofa

with a hot chocolate



Jump in muddy puddles



Bake bread hedgehogs AUTUMN GARDENING

WRITE YOUR NAME IN SPARKLERS

